

Compressed Air & Gas Drying and Filtration Equipment

STYL AIR

SEH Series Heated Purge Desiccant Dryers

StylAir SEH model dryers are external heat regenerated, twin-tower desiccant dryers designed to remove water vapor from compressed air and gas streams to a pressure dewpoint of -40°F and lower.

Heated Purge dryers are preferred in many applications for their simple, reliable design while maintaining the economy of operation of a heat regenerated dryer. StylAir SEH dryers typically use less than half the purge of a heaterless dryer. A continuous flow of dry air or gas is provided to eliminate moisture and contaminants found in all air and gas systems.



Standard Features

- -40°F line pressure dewpoint
- ASME Code desiccant vessels
- NEMA 8 hour cycle, fully automatic operation
- Fail safe operation. Continuous flow on loss of power or control air
- Non-lubricated valves
- Tower pressure gauges on all models
- Digital temperature control and indication for regeneration
- Counter-current regeneration for best dewpoint
- Integral cool down step to prevent dewpoint and temperature spikes at switchover
- Gradual blowdown and repressurization for long desiccant life
- ASME relief valve on outlet manifold
- Full charge of desiccant
- Heavy duty angle and channel support base
- NEMA 4 electrical construction
- Cycle Failure Alarm
- On-Off switch with power-on light & sequence lights
- LED pilot lights

Optional Features

- -70°F to -100°F and lower line pressure dewpoint
- Purge Rate Flowmeter - included on larger models
- Dewpoint Demand Systems
- NEMA 4X, 7 electrics
- Entrainment Separators
- Coalescing Prefilters
- Afterfilters
- Mounted filters, manual bypasses
- SCR solid state heater controller
- Dewpoint monitors and alarms
- Color change dewpoint indicator
- Temperature gauges
- Steam heat regeneration
- Special designs available for flows to 30,000 SCFM and pressures to over 5000 PSIG
- Construction for corrosive environments, explosive process gases, off-shore installations
- Optional voltages

StylAir Heated Purge Regenerative Desiccant Dryers

The StylAir regenerative desiccant dryer is a fully automatic unit designed to dry compressed air or gas to meet or exceed the customer's requirements. The dryer consists of dual drying chambers which are alternately cycled through drying and regeneration cycles. One chamber is drying air at all times.

The wet, compressed process air flows through one drying tower where water vapor is adsorbed into the desiccant - an inert, hygroscopic material with an enormous surface to mass ratio. The off-stream drying tower is regenerated by taking a small amount of the dried process air (purge) and heating it in an external heater chamber and then passing it through the bed at low (atmospheric) pressure. The moisture trapped in the desiccant is released and is carried off by the purge flow and exhausted to atmosphere. A cooling step in the cycle insures that there are no temperature or dewpoint spikes at switchover.

Conservative Tower Sizing - Designed for Optimum Performance and Long Desiccant Life

- Low upflow velocities - < 60 fpm
- Long contact times - 5 sec or more
- Controlled blowdown and repressurization

Rugged, Reliable Industrial Controls

- Low watt density heaters with Incoloy elements
- Integral flow switch for heater protection and low purge flow indication
- UL components from controllers to terminal boards - to provide that extra measure of safety
- High style NEMA 4 enclosures
- Microprocessor/PLC based controls provide real diagnostic info

Proven high reliability valving

- Designed for air dryer service
- Non-lubricated, high cycle design
- Easy maintenance
- Only dry, filtered pilot air is used for actuated valves

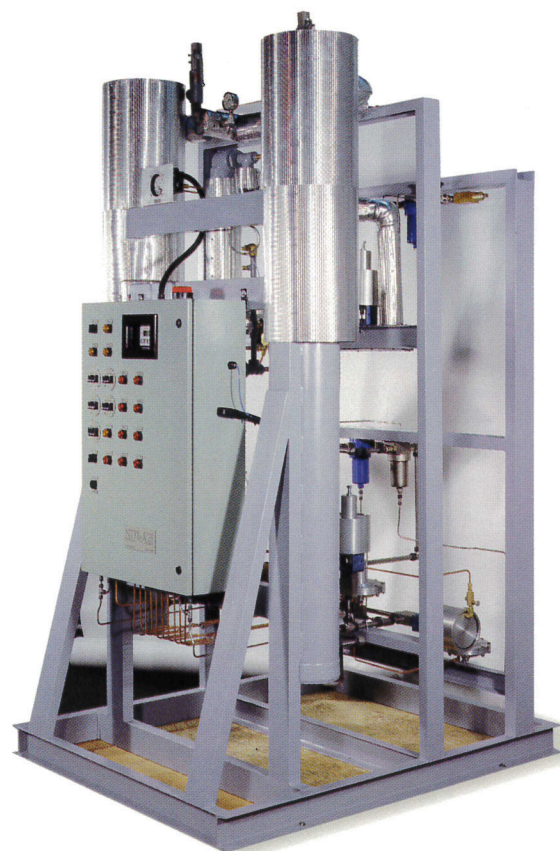
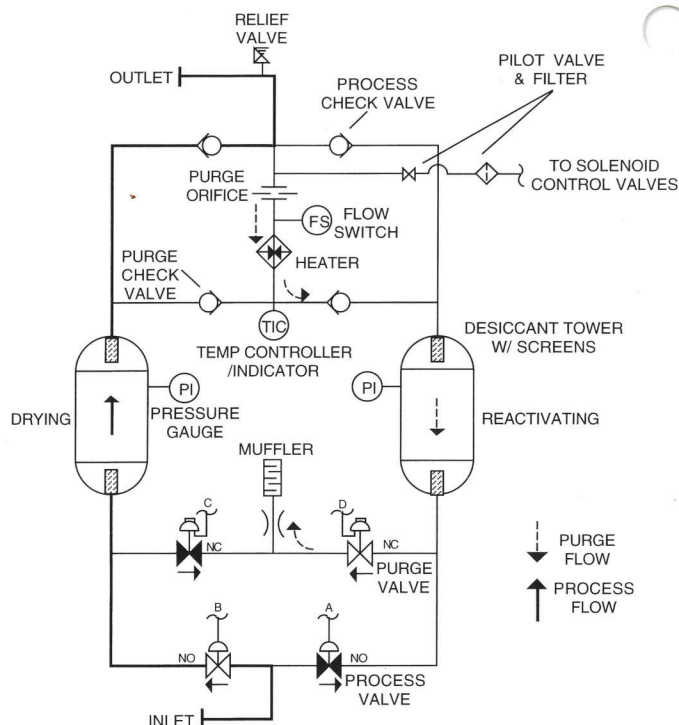
Drying towers, heater housing and hot regeneration piping are insulated for energy savings and personnel protection.

SS Desiccant Support/Flow Distributors

- Practically indestructible wedge-wire design prevents collapse or tearing
- Cleanable and reusable

Separate desiccant fill and drain ports on all models

Standard high temp (800°F) coating provides a tough, corrosion and weather resistant finish.

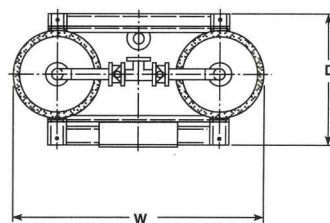
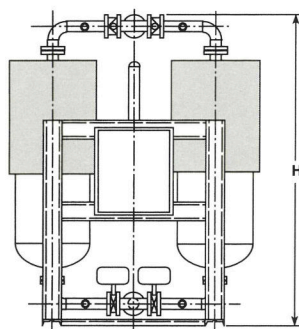


5000 PSIG Process Dryer

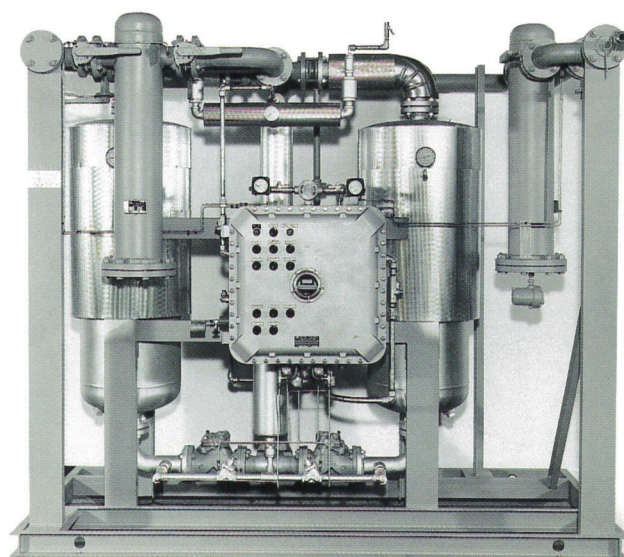
Specifications
SEH Series

MAXIMUM FLOW CAPACITIES (SCFM)

Model SEH-	90 PSIG			100 PSIG			110 PSIG			Conn. Size	App. Dims. W x D x H	App. Wgt.
	95°F	100°F	105°F	95°F	100°F	105°F	95°F	100°F	105°F			
A06	68	58	50	75	65	55	80	70	60	3/4"	45 x 22 x 85	320 lbs.
A08	114	97	85	125	105	90	135	115	100	1"	50 x 22 x 84	425 lbs.
A10	135	117	100	150	130	110	160	140	120	1"	54 x 24 x 72	600 lbs.
A10L	190	162	140	205	180	155	225	195	170	1-1/2"	54 x 24 x 89	700 lbs.
A12	275	235	202	300	260	225	327	280	245	1-1/2"	58 x 24 x 92	830 lbs.
A14	375	320	275	405	355	305	445	380	330	1-1/2"	62 x 26 x 92	1000 lbs.
A16	485	420	360	530	460	400	585	500	435	2"	66 x 30 x 96	1200 lbs.
A18	610	525	450	665	575	500	730	625	545	2"	72 x 30 x 98	1550 lbs.
A20	765	655	565	830	720	625	910	780	680	3" Flgd.	74 x 38 x 96	1950 lbs.
A24	1070	920	795	1160	1010	875	1280	1090	950	3" Flgd.	80 x 42 x 96	2300 lbs.
A30-3	1375	1180	1020	1500	1300	1125	1645	1405	1225	3" Flgd.	92 x 48 x 96	3800 lbs.
A30-4	1835	1575	1360	2000	1725	1500	2190	1875	1635	4" Flgd.	92 x 48 x 110	4600 lbs.
A36-4	2525	2170	1875	2750	2350	2050	3015	2575	2250	4" Flgd.	104 x 58 x 116	6200 lbs.
A36-6	2525	2170	1875	2750	2350	2050	3015	2575	2250	6" Flgd.	104 x 58 x 116	6500 lbs.
A42	3440	2960	2555	3750	3250	2800	4110	3515	3065	6" Flgd.	138 x 52 x 118	7900 lbs.
A48	4280	3680	3180	4650	4050	3500	5120	4375	3815	6" Flgd.	144 x 60 x 118	9800 lbs.



3000 SCFM Process Dryer

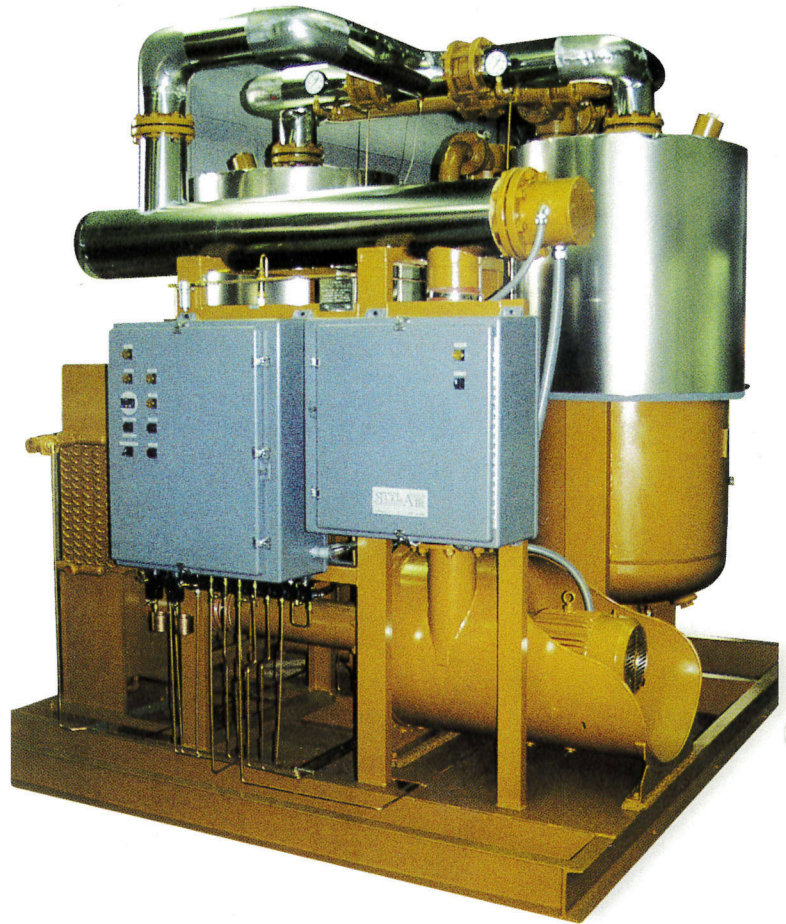


Hazardous Location Dryers

StylAir Blower Purge Heat Regenerated Dryers

When process requirements demand no loss of dried product air or gas for regeneration, StylAir open or closed loop blower purge dryers are the obvious choice.

Utilizing a high performance quiet centrifugal blower, the regeneration cycle is unaffected by fluctuations in the process flow. The same careful attention to digital temperature control as in our heated purge dryers is applied to our blower models.



Dewpoint Monitors



Support/Flow Distributors

STYL AIR

StylAir, LLC
161 Woodford Avenue
P.O. Box 7014 Plainville, CT 06062

Visit Our Website: WWW.STYLAIR.COM

**Compressed Air & Gas Drying
and Filtration Equipment**

Ph (860) 747-4588 Fax (860) 793-9730